

# GREEN CASTLE

CUSTOM HOMES - CONSTRUCTION MANAGEMENT

**FOR SALE**

## TO BE BUILT:

2 STORY 2400 Sq. Ft. HOME

### THIS HOME'S STANDARD FEATURES ARE:

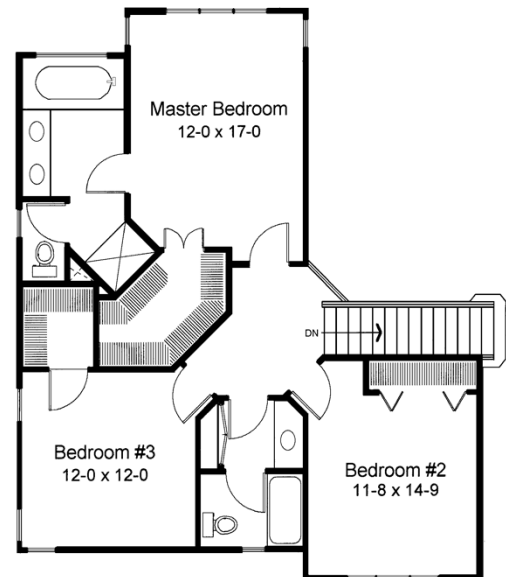
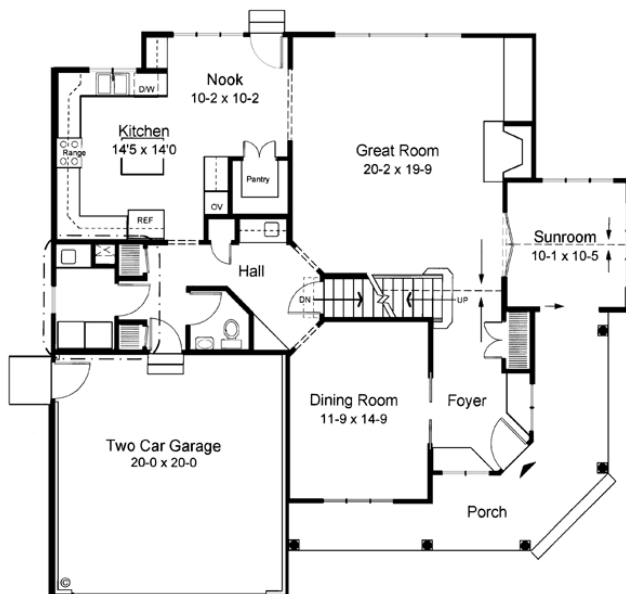
- Trus Joist Construction
- Timberline 30 Year Roof Shingles
- Certainteed Cedar Impressions on front and Monogram siding on rest
- Composite Front Porch
- Vinyl Low-E Windows
- Insulated Garage
- 2 Zone High Efficiency A/C – Heat
- 3 1/2" Casing & 5 1/4" Base Trim
- 2 Tone Paint
- Oak Stairs and Rails
- Frigidaire Stainless Steel Appliances



1215 Bryant Ave. Toms River, NJ

**FOUNDATION HAS STARTED! STILL TIME TO SELECT EXTERIOR COLORS – UNTIL MARCH 15<sup>th</sup>.**

**PICK ALL INTERIOR TILE, WOOD, CARPET, STYLES AND COLORS. SELECT CABINET WOOD, STAIN, STYLE, AND COUNTER SURFACES.**



CALL BUILDER DIRECT **609-693-5888**

WE CAN HELP WITH FINANCING & CONTINGENCIES ARE WELCOME.

OFFERED @ ~~\$ 529,900.00~~

**\$ 479,900.00**

SEE OUR WEBSITE FOR MORE INFORMATION: [www.greencastleconstruction.com](http://www.greencastleconstruction.com)

